



Connect the world, Connect the future.

#8103.TT

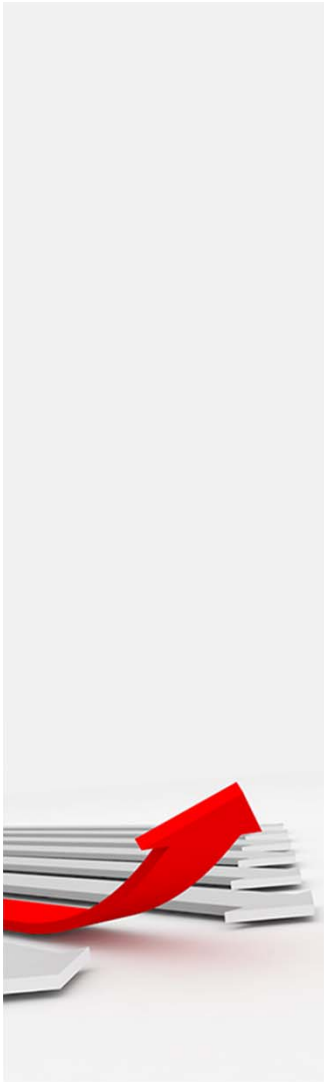
Safe Harbor Notice



- The information contained in this presentation, including all forward-looking statements, is subject to significant risks and uncertainties and actual results may differ materially and may change without notice, whether as a result of new information, future events or otherwise, and CVILUX CORPORATION (the “Company”) undertakes no obligation to update or revise the information contained in this presentation.
- Investors are cautioned not to place undue reliance on these forward-looking statements, which are made as of the date of this presentation, and Company assume no obligation to update or revise any forward-looking statements.

Agenda

- ◆ 4Q 22 Results
- ◆ Business Outlook
- ◆ ESG Realization
- ◆ Q & A



4Q22 Income Statement



(NTD in thousand)

	2022 Q4	2021 Q4	YOY
營業收入 Net Sales	749,874	1,108,275	-32%
營業成本 Cost Of Goods Sold	511,992	787,230	-35%
營業毛利 Gross Profit	237,882	321,045	-26%
毛利率 %	32%	29%	
營業費用 Operating Expenses	186,006	187,077	-1%
費用率 %	25%	17%	
營業利益 Operating Profit	51,876	133,968	-61%
營益率%	7%	12%	
業外收支 Total Non-Op. Inc & Exp.	(26,186)	(27,423)	
所得稅 Income Tax Expenses	8,718	33,090	-74%
稅後淨利 Net Profit	16,972	73,455	-77%
每股盈餘 Earnings Per Share	0.22	0.94	-77%

Full year performance

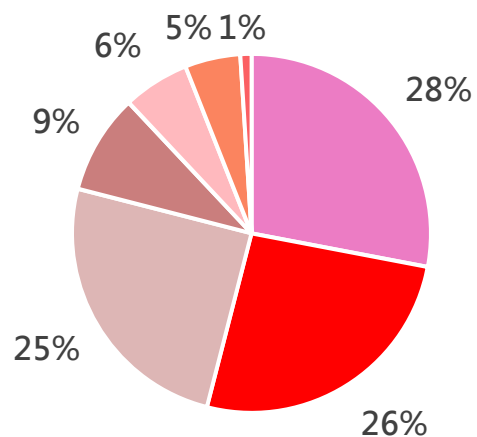
(NTD in thousand)



	2022	2021	YOY
營業收入 Net Sales	3,727,014	4,159,393	-10%
營業成本 Cost Of Goods Sold	2,620,589	2,912,083	-10%
營業毛利 Gross Profit	1,106,425	1,247,310	-11%
毛利率 %	30%	30%	
營業費用 Operating Expenses	735,076	694,615	6%
費用率 %	20%	17%	
營業利益 Operating Profit	371,349	552,695	-33%
營益率%	10%	13%	
業外收支 Total Non-Op. Inc & Exp.	132,630	(45,274)	
所得稅 Income Tax Expenses	175,897	171,099	3%
稅後淨利 Net Profit	328,082	336,322	-2%
每股盈餘 Earnings Per Share	4.2	4.29	-2%

2022 Products Mix

(YoY)



- Note Book
- Server & Communication
- Industrial Application
- Devices & Consumer
- Electro-optical
- Automotive
- AiOT

	2021 Jan-Dec	2022 Jan-Dec	YOY
Note Book	30%	28%	-15%
Server & Communication	24%	26%	-5%
Industrial Application	22%	25%	+1%
Devices & Consumer	9%	9%	-12%
Electro-Optical Industry	8%	6%	-22%
Automotive	3%	5%	+51%
AIoT	2%	1%	-27%

2022 Products Mix

(quarterly)



	Q1	Q2	Q3	Q4
Note Book	32%	26%	26%	27%
Server & Communication	23%	24%	27%	30%
Industrial Application	21%	29%	28%	25%
Devices & Consumer	10%	9%	8%	7%
Electro-optical	10%	5%	4%	5%
Automotive	2%	5%	5%	5%
AIoT	1%	2%	1%	1%

2023 Products Mix

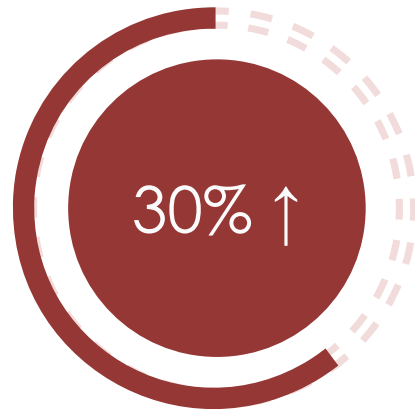
(monthly)



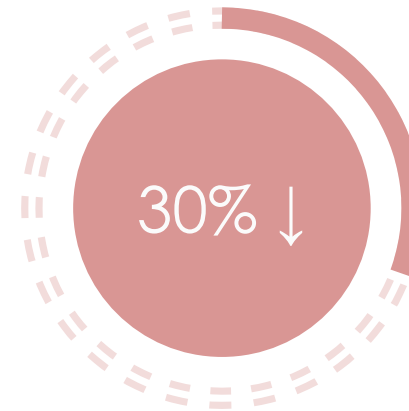
	2023 Jan	2023 Feb
Note Book	29%	25%
Server & Communication	24%	31%
Industrial Application	22%	21%
Devices & Consumer	9%	11%
Electro-optical	6%	7%
Automotive	5%	5%
AIoT	4%	0%

Gross Margin

2022



- Industrial Application
- Server & Communication
- Automotive
- Electro-Optical Industry
- 38%~30%



- Note Book
- AIoT
- Devices & Consumer
- 27% ~5%

ESG Realization



- 2003** • Earned SONY's Green Partner certification
- 2005** • Obtained **ISO 14001** Environmental Management Systems
- 2005** • Earned Canon's Green Partner certification
- 2007** • SONY verified our Suzhou Factory as their Green Partner
- 2008** • Earned Pegatron's Green Partner certification
- 2008** • Promote non-halogenated products, reduce the use of halogen barriers in response to green product design
- 2010** • Carrying out ISO 14067's Carbon Footprint Verification
- 2011** • **Reached QC 080000** Hazardous Substance Process Management System Requirements
- 2012** • Verified by **ISO 14064** Greenhouse gases inventory
- 2012** • Cvilux Chongqing(CQC) reached **ISO 14001 and QC 080000 requirements**
- 2013** • Suzhou Factory verified by **ISO 14064** Greenhouse gases inventory
- 2020** • Earned Swisscom's Sustainable development Program (**SDP**) **Award-Grade Silver**
- 2021** • **Self-composed ESG Report accomplished**
• Complete Greenhouse gases inventory
- 2022** • **CviLux Lao Reached QC 080000** Hazardous Substance Process Management System Requirements

ISO14064 Deployment Carbon Footprint Verification



GOAL
Carbon decrease -3%
(2022~2025)

BMS (Building Management System)



Environmental Detection · Power Management · Lighting Control · Water Valve Adjustment

環境偵測器

1樓	CO2 (400 PPM)
1樓	CO (0 PPM)
1樓	溫度 (26 °C)
1樓	溼度 (65%)

記錄

主選單

CviLux Group

電源偵測器

1樓	1 k Watts
2樓	560 Watts
3樓	2.5 k Watts
4樓	1.5 k Watts
5樓	3 k Watts

記錄

主選單

CviLux Group

照明控制系統

1樓照明全	ON
1樓區域01	ON
2樓區域03	ON
全部照明	ON
3樓區域01	ON

排程

主選單

CviLux Group

水閥控制系統

1樓水閥	ON
2樓水閥	OFF
3樓水閥	ON
4樓水閥	ON
5樓水閥	ON

排程

主選單

CviLux Group

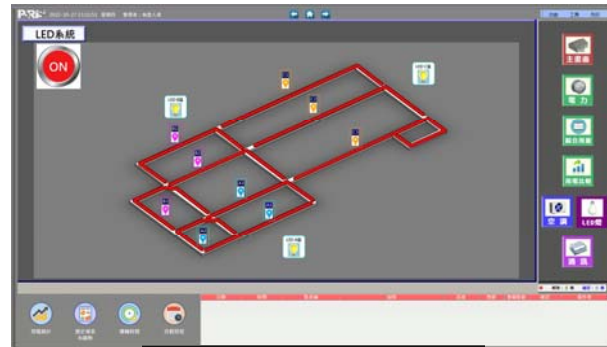


BMS (Building Management System) Environmental friendly IIoT

IIoT 、 Environmental friendly



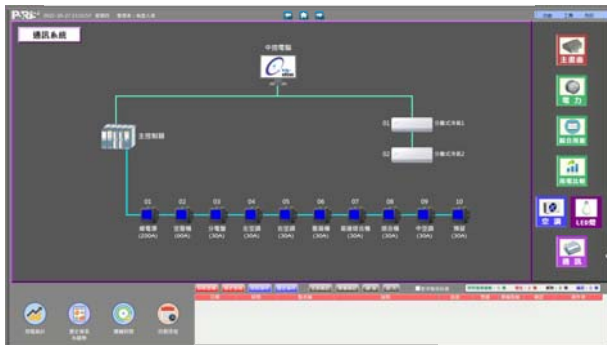
Air Conditioning Control



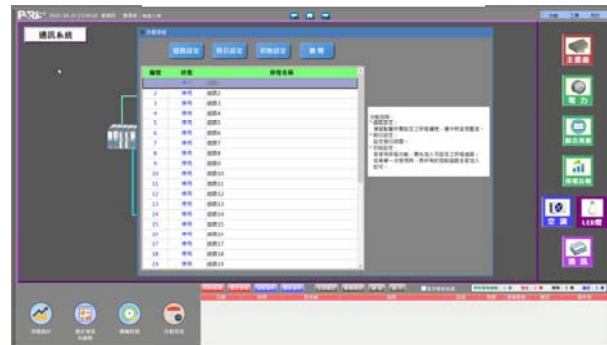
Lighting Control



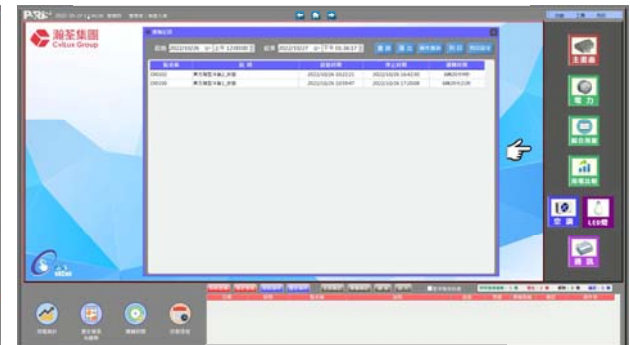
Power Usage Recorder



Power status detector



Production Scheduling

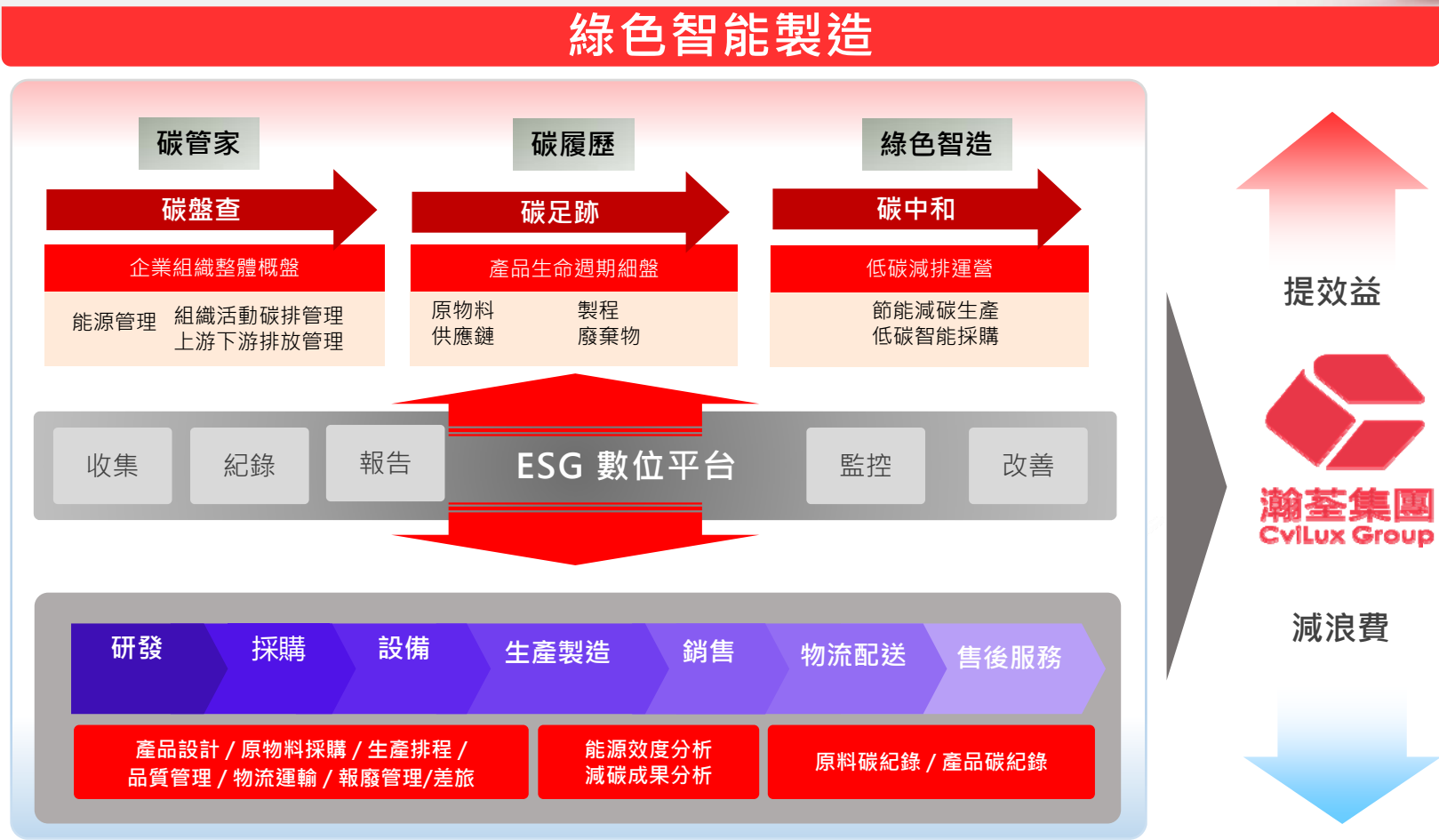


Operation Record

From AI manufacturing to Green manufacturing



驅動綠色智能制造
ESG目標
提升員工效率 & 客戶滿意度





Q&A Connect the world, Connect the future.